

Introduction

Chess Captor is a program I wrote for the purpose of creating chess diagrams. The strength of Chess Captor is that it can create beautiful and clear diagrams on the fly. Using Chess Captor can best be compared to sitting in front of a chess board yourself: you have total control over how pieces move, where you want to insert new pieces, what moves to make etc. No validation of played moves takes place. This also makes Chess Captor a great utility for analyzing and replaying games. No beeps or error messages when making illegal moves....

Chess Captor is not free software. It is released as shareware, which provides the opportunity for the program to be evaluated before it is purchased. I hope that when you try Chess Captor you will like it so much that you will want to [register](#) it.

Word to version 1.2x

This is an updated version of the help file that came with Chess Captor 1.10. This one serves for the versions 1.2x of Chess Captor. The x means that this help file will remain unchanged when versions like 1.21 and 1.22 will be released. It is at this moment not sure at all whether these versions will ever be released since any version that does not end on a zero contains bug fixes only (like e.g. versions 1.01 and 1.02).

What's new in Chess Captor version 1.20?


- Chess Captor now allows you to shade the chess board squares. This option was added because printing results with gray colored squares weren't satisfactory. In order to better support printing the Smart Regular and Linares styled pieces were completely redesigned using only black and white colors.
- File menu was added
- Empty Clipboard menu option added
- Sound setting added; you can choose if you prefer to run Chess Captor silently or not
- You can set the colors of the chess board squares to any of 16 million colors
- Minor bugs in Promotion and Save As windows fixed

Customizing the Board

This new feature will let you fully customize Chess Captor's chess board. If you select "Customize Board" on the "Options" menu or press CTRL + B on the keyboard the customize window will pop up. This window contains two tabs, one for the squares and the other for the pieces.

Squares tab:

Here you can set the colors for the squares. In order to change the colors you first have to select what squares you want to edit. You can do this in the top half of this tab. Then clicking on any of the colored squares in the bottom half of the window will set this color to be the color for the squares you selected earlier. If you want to choose from more colors you

must press the  button. Another window will pop up containing a color palette. Clicking anywhere on this palette will show the color in the little box in the lower left corner of this window. Once you have found a color you like click the Ok button. Click Cancel to leave without selecting any color.

Once you are done selecting colors you are not done yet. In order to make any changes to the colors of the squares you must press the "Apply" button. Your changes will be remembered by Chess Captor. If you at any stage, wish to return to the default colors you can press the Defaults button.

Pieces tab:

Besides changing the colors of the squares on the chess board you can now also change the style of the chess pieces. Chess Captor now supports three different styles:

- Smart Regular
- Hastings
- and Linares.

In the list the current style will be selected. If you want to change the style just click another one and press the Apply button. Chess Captor will remember your favorite style. You can restore the default style (Smart Regular) by clicking the Defaults button.

Note: In order to change any settings with the Defaults and Apply buttons you must make sure that you have the correct tab selected. If you haven't changed any settings for a tab yet the Apply button will be disabled.

Setting up a Position

When using Chess Captor you will notice that there are different ways to set up a diagram:

- clicking a square and selecting the piece to insert
- dragging and dropping already existing pieces over the chess board.

Both methods are executed by clicking a different mouse button. The default setting in Chess Captor lets you select squares by left-clicking them. Dragging and dropping is done with the right mouse button. If you want you can invert the functionality of the mouse buttons by selecting "Options" on the menu and clicking "Switch Button Functions". Chess Captor will remember your preference the next time it starts.

Clicking a square:

After clicking a square you will notice that the square will be bordered by a thin black line. This means that the square is ready to receive a piece. You can now insert a piece into the square by either clicking the desired piece on the toolbar or by selecting "Set Up", "Insert White..." or "Insert Black..." followed by clicking on the preferred piece on the menu.

« **Tip** » You can select more than one square simultaneously by holding the CTRL key down and clicking on squares. Clicking on a already selected square will unselect it.

Drag and drop:

Chess Captor lets you drag and drop the chess pieces freely over the chess board. If you move a piece to a square that already contains a piece, the existing piece will be removed from the board. Dragging and dropping a piece can be done as follows:

- 1 clicking with the right mouse button on a square which contains a piece - you will notice that the shape of the mouse pointer changes from an arrow to the shape of the clicked piece
- 2 keeping the mouse button pressed and moving the mouse pointer - which resembles the piece - to its destination
- 3 letting go of the mouse button.

« **Tip** » If you want to setup the starting position you don't have to insert all the pieces individually, you can either select "Setup" and "Starting Position" or use the keyboard shortcut by hitting the CTRL and S keys simultaneously.

Note: Chess Captor does not allow you to place white pawns on the 1st row and black pawns on the 8th row.

Clearing Pieces

Chess Captor allows you to remove pieces from the board in two ways: one at a time or the whole board at once.

Clearing a square

If you want to remove a piece from the board you can either drag and drop another piece onto it or do the following:

1 left click with the mouse on the square you want to be cleared (the square will become bordered by a thin black line)

2

3 click the



button on the toolbar, select "Setup", "Clear" and "Square" on the menu OR press the "Delete" button on your keyboard.

• if you want to clear more than one square at the same time you can select multiple squares by clicking them with CTRL button pressed


Clearing the entire board




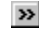
The fastest way to clear the board is by clicking the button on the toolbar or by selecting "Setup", "Clear" and "Board" on the menu. Another possibility of course is clearing each square individually as described in Clearing a square.

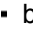
Capturing a position

Chess Captor allows you to capture a position to

 the clipboard

 your printer

 or to a file.

In order to let Chess Captor know where to you want to capture you should first select "Options", "Capture to.." and set the preferred destination. Chess Captor remembers the last destination you chose. You can now capture the position by either clicking the  button on the toolbar or by selecting "Options" and "Capture Position" on the menu.

Capturing to the Clipboard

This option captures a raw bitmap image of the chessboard to the clipboard. You can paste the image into any windows program that supports bitmaps. Most word processing and graphical programs do.

If you want to import the graphic into a document of a text editing program be sure to select "Paste Special" and not just "Paste" in that program. If a window appears asking you if you want to paste the image as a device independent bitmap or as a bitmap you would best select bitmap.

Capturing to a Printer

As the name implies this will print the chess diagram. The diagram will be printed all right but I recommend importing the diagram into a text editing program since this will provide you with more editing options and better quality prints. In a standard text editor you will be able to add comments, text, print multiple diagrams on one page etc.

However, if you choose to print directly from Chess Captor, here are some things you should take into consideration. In the "Options" menu is a "Print Setup" option that lets you configure several printer parameters:

- printer
- printer orientation
- print quality.

The **printer** drop down box will show all devices on your system that can print the diagram. The default printer will show. If you have more than one printing device connected to your system you can select another by clicking the down arrow.

Printer orientation will allow you to print in landscape or normal mode.

And finally you can select another **print quality**. On most modern printers changing print quality will not result in any significant changes in the quality of the print, however, on some older printers you should see a difference.

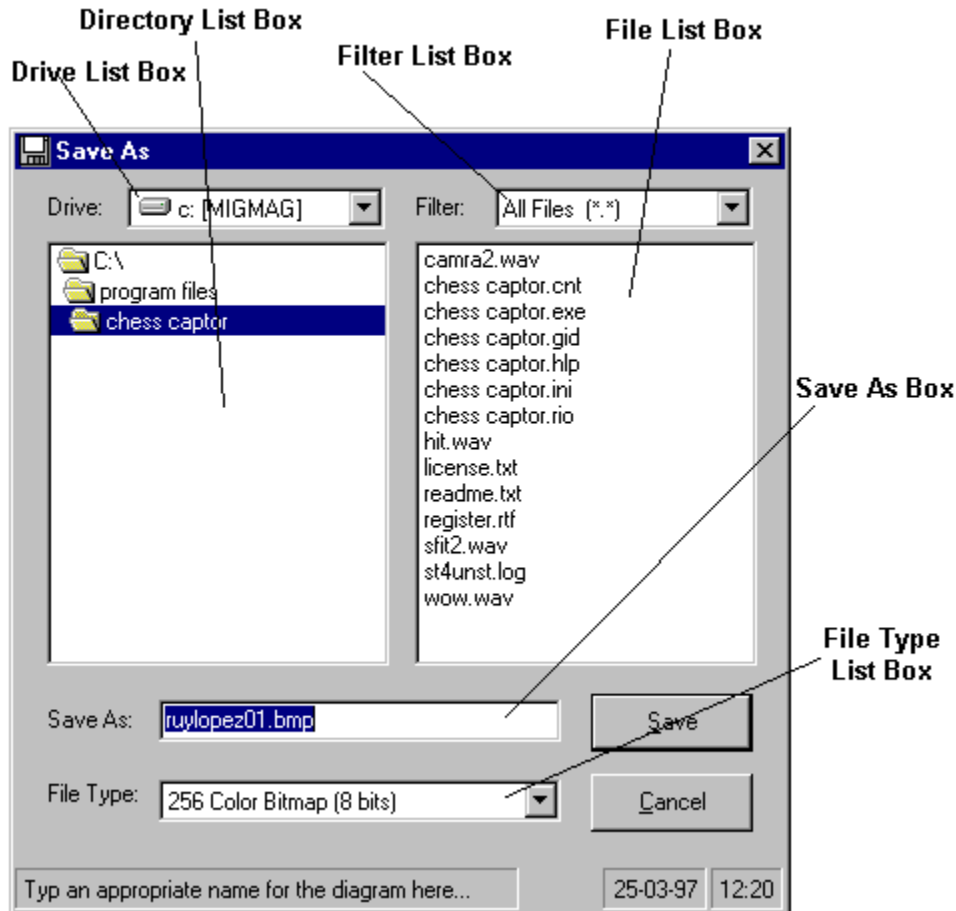
If you do not change any settings in the print setup window before hitting the capture button, Chess Captor will print using the default settings. These are:

- printer: default printer on your system
- printer orientation: portrait
- print quality: medium.

Printing chess diagrams will provide for the best results when you select either the Smart Regular or Linares piece styles. It is not recommended to use the Hastings piece styles for printing purposes; it is virtually impossible to design good looking 32x32 pixel pieces in this style using black and white colors only. I also recommend to use the diagonally shaded square style for the dark squares of your chess board.

Capturing to a File

When you choose to capture to a file Chess Captor's **Save As** dialog will pop up.



In the **drive list box** you can select to which drive you want to save your diagram. You can change drives by clicking the down arrow and clicking another drive.

Under the drive box you can see a list box that contains the directories on the selected drive. In this box, **the directory list box**, you can change directories by double clicking with your mouse on a directory name.

Next to the drive box lies another box; **the filter** box. You can set here what files you want to see in the file list box. Choosing Bitmaps (*.bmp) will show only files with the extension bmp. Selecting All Files (*.*) will show all files in the current directory. You can change filters by clicking the down arrow on the filter box and selecting the other filter.

Under the filter box, right from the drive box, is the **file list box**. The file list box shows the files in the directory selected in the directory list box applying the filter selected in the filter box. A single mouse click on a file name will show the file's name in the save as text box. Double clicking a file will overwrite the existing file. Chess Captor will ask you to confirm your action if you chose to overwrite a file.

Next in line is the **save as box**. When you want to save a file you also have to let Chess Captor know how you will want to name it. Chess Captor does not except filenames containing any of the following characters: / \ ? * " < > : | . (the period character is only accepted as a separator between file's name and file's extension.) It is not necessary to

type the filename extension, Chess Captor verifies the filename you typed and adds ".bmp" if necessary.

Last but not least is the **file type box**. In this box you have to select in what format bitmap you would like to save your diagram. Chess Captor currently supports saving in: 4 bit, 16 color and 8 bit/24 bit 256/true color bitmaps. 4 bit bmps are generated by Chess Captor; the others are generated by the Windows operating system and are in 8 bit, 256 color format when running Windows in 256 color modes or in 24 bit, true color format when running Windows in 16 bit or 24 bit color modes. File size varies correspondingly: 34 KB with 4 bit, 67 KB with 8 bit and around 200 KB with 24 bit images.

If you think you have filled out everything correctly you can save the file by clicking the "Save" button. If you changed your mind and do not want to save the file at all you should press the "Cancel" button.

- Chess Captor saves the captured diagrams in the BMP image format. This format is not very efficient. You will save disk space if you save your pictures in GIF format. The average Chess Captor BMP will be at least 34 KB large while a GIF will only be 6 or 7 KB!

Registration

If you like Chess Captor why don't you consider registering it? Registering will help me develop Chess Captor further and is very affordable. Depending on whether you are connected to the Internet or not you can receive the registration number for Chess Captor by email or by normal mail. Registering by email will be faster and cheaper...

Registered users of Chess Captor 1.10 can upgrade freely to Chess Captor 1.20.

Here are the prices for registering Chess Captor in various currencies:

<u>Currency</u>	<u>Price (e-mail)</u>	<u>Price (normal mail)</u>
U.S. Dollars	\$ 5.00	\$ 7.00
German Marks	DM 10.00	DM 13.00
British Pounds	£ 5.00 *	£ 5.00
Dutch Guilders	HFL 10.00	HFL 13.00
Portuguese Escudos	\$ 1000	\$ 1200

*) rounded off to lowest money bill value

I do not except any other currencies. **Do not send any coins unless you cannot meet the amount with money bills only!!** Banks here only accept foreign money bills, no coins. For further details and the registration form please consult the file "register.rtf" that comes with Chess Captor. You can view rich text (rtf) files in Windows Wordpad and most other word processing programs.

Note: you can pay in any of the above mentioned currencies independently of where you live.

